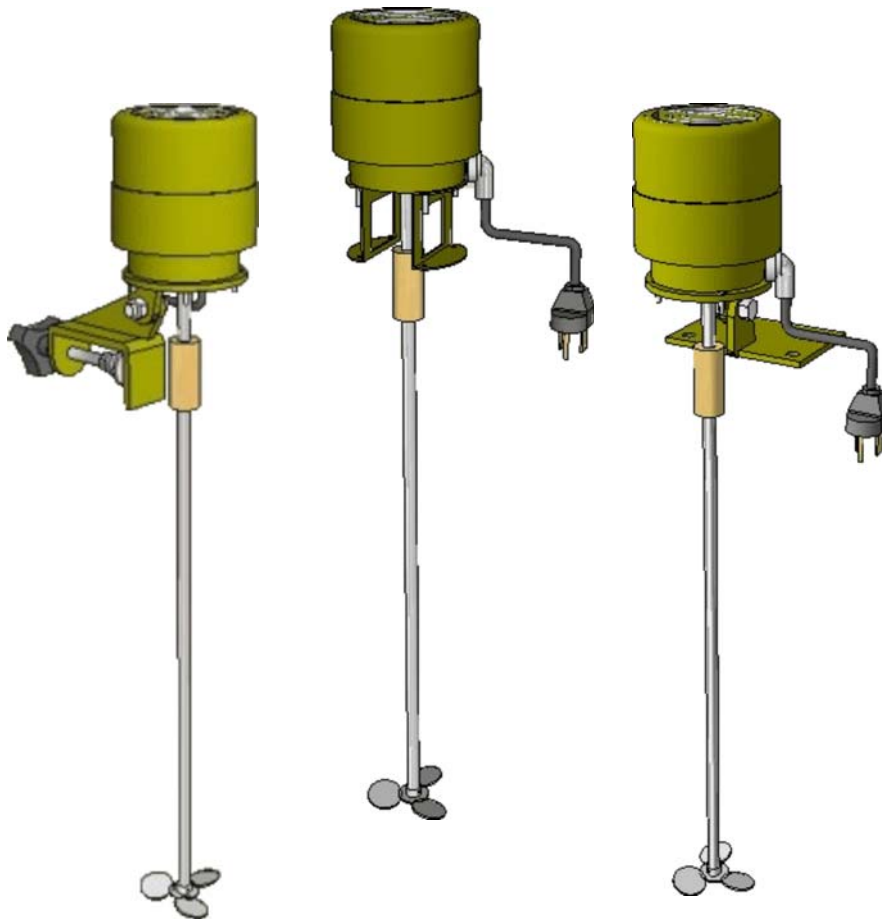




“Chem-Mix” High Speed Industrial Mixers



**Model, Serial Number and Other Information
is recorded for you on the back of this document.**

Manufacturing: Bypass & Filter Feeders, Glycol Feed Packages, Tanks, Tank Stands, Chemical Batch Mixers, Corrosion Coupon Racks and Custom Systems

P.O. Box 8697, Brea, CA 92822-5697 ♦ Phone: 714) 257-9165
266 Viking Ave., Brea, CA 92821 ♦ Fax: 741) 257-9215
☞ www.gtpcompany.com ♦ customerservice@gtpcompany.com ☞

Contents	Page
1.0 Introduction	2
2.0 Warranty	2
3.0 Unpacking	3
3.1 Order Verification	3
4.0 Location and Environment	3
5.0 Installation	3
5.1 Mixing Orientation	4
5.2 Mixer Shaft Placement	4
6.0 Pressure and Temperature Limitations	4
7.0 Routine Maintenance	4
8.0 Parts Listing	5
9.0 Trouble Shooting	6
10.0 Notes	6
11.0 Product Label, Model Number, Serial Number and Pressure Settings	6

***** WARNING *****

- ★ ALL FASTENERS SHOULD BE PROPERLY SECURED BEFORE OPERATION AS THEY MAY BE LOOSENED IN TRANSIT
 - ★ PERSONNEL SAFETY PRACTICES SHOULD APPLY AT ALL TIMES
- ★ SAFETY GLASSES OR FACE SHIELDS AND GLOVES SHOULD BE WORN AT ALL TIMES
 - ★ BEFORE START UP, ALL MOUNTING HARDWARE AND SET SCREWS, SHOULD BE TIGHTENED FOR PROPER MIXER PERFORMANCE
 - ★ ALL LIQUIDS IN SYSTEM SHOULD BE DRAINED BEFORE SERVICING

★ 1.0 Introduction

Thank you for choosing General Treatment Products “Chem-Mix” Chemical Mixers. This industrial, assembly comes complete and ready to install. In this document we explain the basics for locating, installing and operating this chemical mixer. For further information, please contact us at customerservice@gtpcompany.com or call us at the phone number on the cover.

★ 2.0 Warranty

General Treatment Products “Chem-Mix” Chemical Mixers are guaranteed for two years from date of shipment against manufacturing defects in material and workmanship that develop in the service for which they are designed. We will repair or replace a defective part of this system when returned to our factory with freight prepaid; providing that the part is found to be defective upon inspection. We assume no liability for labor and/or other expenses in making repairs or adjustments.

★ 3.0 Unpacking

Upon receipt of order, inspect package thoroughly. In the event damage occurred in transit you must notify the freight company within **3-5 days of receipt of order**. Once mixer is inspected for damage and received in good condition, store indoors until installing.

★ 3.1 Order Verification

In order to verify receipt of correct product, use the following table and model number to identify the contents.

MODEL																																																																	
MH	-B	-0066	/SSC-EK																																																														
<table border="1"> <thead> <tr> <th colspan="2">OPTIONS</th> </tr> </thead> <tbody> <tr> <td>SSC</td> <td>Stainless Steel Coupling, in place of standard brass</td> </tr> <tr> <td>STS</td> <td>Pump Suction Tube Shield</td> </tr> <tr> <td>PSW</td> <td>Power Cord Switch, 2amp resistive</td> </tr> <tr> <td>CPM</td> <td>Control Panel, Motor Starter and Overload</td> </tr> <tr> <td>EK</td> <td>Green Epoxy Coating of Shaft and Axial Impeller</td> </tr> <tr> <td>TFE</td> <td>Green Teflon Coating of Shaft and Axial Impeller</td> </tr> <tr> <td>(“)</td> <td>Shorter than Standard Shaft</td> </tr> <tr> <td colspan="2">Note: See pricing for complete options list</td> </tr> <tr> <th colspan="2">HORSEPOWER</th> </tr> <tr> <td>0014</td> <td>1/70HP</td> </tr> <tr> <td>0020</td> <td>1/50HP</td> </tr> <tr> <td>0033</td> <td>1/30HP</td> </tr> <tr> <td>0066</td> <td>1/15HP</td> </tr> <tr> <td>0166</td> <td>1/6HP</td> </tr> <tr> <td>0250</td> <td>1/4HP</td> </tr> <tr> <td>0330</td> <td>1/3HP</td> </tr> <tr> <td>0500</td> <td>1/2HP</td> </tr> <tr> <td>0750</td> <td>3/4HP</td> </tr> <tr> <td>1000</td> <td>1HP</td> </tr> <tr> <td>1500</td> <td>1 1/2HP</td> </tr> <tr> <td>2000</td> <td>2HP</td> </tr> <tr> <th colspan="2">MOUNT</th> </tr> <tr> <td>B</td> <td>Bracket Mount, Adjustable</td> </tr> <tr> <td>C</td> <td>Clamp Mount, Adjustable</td> </tr> <tr> <td>T</td> <td>Thread Mount</td> </tr> <tr> <td>F</td> <td>Flange Mount</td> </tr> <tr> <th colspan="2">MODEL BASE</th> </tr> <tr> <td>MH</td> <td>“Micro-Horsepower” 1/70HP to 1/15HP</td> </tr> <tr> <td>GD</td> <td>“General-Duty” 1/6HP to 3/4HP</td> </tr> <tr> <td>HD</td> <td>“Heavy-Duty” 1HP to 2HP</td> </tr> </tbody> </table>				OPTIONS		SSC	Stainless Steel Coupling, in place of standard brass	STS	Pump Suction Tube Shield	PSW	Power Cord Switch, 2amp resistive	CPM	Control Panel, Motor Starter and Overload	EK	Green Epoxy Coating of Shaft and Axial Impeller	TFE	Green Teflon Coating of Shaft and Axial Impeller	(“)	Shorter than Standard Shaft	Note: See pricing for complete options list		HORSEPOWER		0014	1/70HP	0020	1/50HP	0033	1/30HP	0066	1/15HP	0166	1/6HP	0250	1/4HP	0330	1/3HP	0500	1/2HP	0750	3/4HP	1000	1HP	1500	1 1/2HP	2000	2HP	MOUNT		B	Bracket Mount, Adjustable	C	Clamp Mount, Adjustable	T	Thread Mount	F	Flange Mount	MODEL BASE		MH	“Micro-Horsepower” 1/70HP to 1/15HP	GD	“General-Duty” 1/6HP to 3/4HP	HD	“Heavy-Duty” 1HP to 2HP
				OPTIONS																																																													
				SSC	Stainless Steel Coupling, in place of standard brass																																																												
				STS	Pump Suction Tube Shield																																																												
				PSW	Power Cord Switch, 2amp resistive																																																												
				CPM	Control Panel, Motor Starter and Overload																																																												
				EK	Green Epoxy Coating of Shaft and Axial Impeller																																																												
				TFE	Green Teflon Coating of Shaft and Axial Impeller																																																												
				(“)	Shorter than Standard Shaft																																																												
				Note: See pricing for complete options list																																																													
				HORSEPOWER																																																													
				0014	1/70HP																																																												
				0020	1/50HP																																																												
				0033	1/30HP																																																												
				0066	1/15HP																																																												
0166	1/6HP																																																																
0250	1/4HP																																																																
0330	1/3HP																																																																
0500	1/2HP																																																																
0750	3/4HP																																																																
1000	1HP																																																																
1500	1 1/2HP																																																																
2000	2HP																																																																
MOUNT																																																																	
B	Bracket Mount, Adjustable																																																																
C	Clamp Mount, Adjustable																																																																
T	Thread Mount																																																																
F	Flange Mount																																																																
MODEL BASE																																																																	
MH	“Micro-Horsepower” 1/70HP to 1/15HP																																																																
GD	“General-Duty” 1/6HP to 3/4HP																																																																
HD	“Heavy-Duty” 1HP to 2HP																																																																

Note: Not all options and sizes available on all mixers.

❖ 4.0 LOCATION AND ENVIRONMENT

All standard GTP “Chem-Mix” models come standard as totally enclosed motors, but should be protected from harsh environmental conditions. The addition of an awning or shed is recommended on outdoor applications and will prolong the life of any equipment.

❖ 5.0 INSTALLATION

Once location is decided on, chemical mixer needs to be securely mounted to frame or sturdy structure. “Chem-Mix” mixers may not be mounted directly to the wall of polyethylene tanks. Polyethylene is a flexible material and eventually will give way to the vibrations and weight of the mixer. **Be sure that anchoring bolts and wiring comply with local building codes.** The following diagrams will help provide the mixing needed. Please contact the factory for assistance.

❖ 5.1 MIXER ORIENTATION

How the mixer is oriented determines the type of mixing produced.

Blending Installation (shown to right)

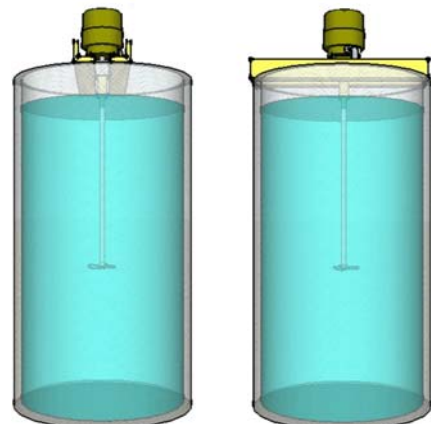
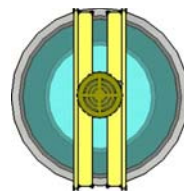
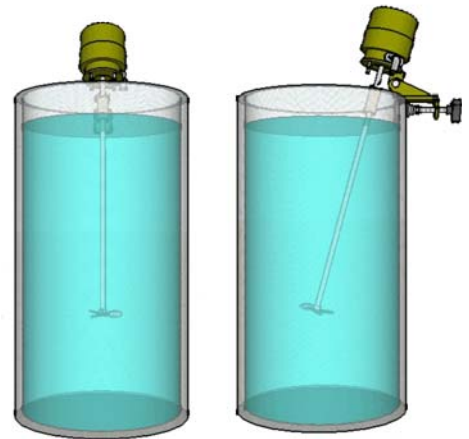
Note: Mixer needs to be installed at 10-15 degrees from vertical and towards center of tank. This will force fluid movement from bottom to top of tank.

If vortexing (fluid funneling) appears, shift angle of mixer towards side wall.

Vortexing Installation (shown to right)

Note: Mixer needs to be installed vertically and in the center of the tank. This will create the best vortex and help draw in dry chemicals. Baffles can be added to the inside of the tank to decrease the vortexing.

If Dry chemicals are not being drawn in, mixer may be undersized. If dry chemicals are settling at the bottom of the tank, the mixer shaft may be too short.



❖ 5.2 MIXER SHAFT INSTALLATION

When installing the mixer shaft, align the red arrow and the set screw dimple, and then hand tighten the shaft set screw with Allen wrench. Be sure to check all fasteners, mounting and set screws, before start up, to ensure proper mixer performance. **DO NOT USE LOCK TIGHT ON SET SCREW, OR SHAFT WILL NOT BE ABLE TO BE REPLACED.**

❖ 6.0 PRESSURE AND TEMPERATURE LIMITATIONS

MATERIAL	MAXIMUM SHORT TERM TEMPERATURE	MAXIMUM OPERATING TEMPERATURE	MAXIMUM OPERATING PRESSURE
Polyethylene (PE)	160°F/69°C	85°F/36°C	N/A
Polyvinylchloride (PVC)	140°F/60°C	85°F/36°C	100PSI/6.9BAR
Chlorinated Polyvinylchloride (CPVC)	180°F/77°C	85°F/36°C	100PSI/6.9BAR
Polypropylene (PP)	180°F/77°C	85°F/36°C	100PSI/6.9BAR
Teflon (PTFE)	200°F/93°C	85°F/36°C	N/A
Carbon Steel (CS)	200°F/93°C	85°F/36°C	150PSI/10.3BAR
Cast Iron (CI)	200°F/93°C	85°F/36°C	150PSI/10.3BAR
Brass (BR)	200°F/93°C	85°F/36°C	150PSI/10.3BAR
Stainless Steel (SS)	200°F/93°C	85°F/36°C	150PSI/10.3BAR

Note: Minimum Fluid Temperature is 50°F/10°C.

❖ 7.0 ROUTINE MAINTENANCE

Routine maintenance in this section is referred to as checking once a week until a maintenance schedule can be determined. **All fasteners should be check for proper operations.** Maintenance and care will depend upon the usage and environment in which the chemical mixer is subject to.

Inspection of should include:

Balance - Be sure that the mixer is not shaking or wobbling

Mounting Hardware - Be sure that the mounting hardware is secure.

Shaft Integrity - Check the shaft for chemical attack.

Fluid Consistency - Check that the fluid is being mixed to your requirements.

❖ 8.0 PARTS LISTING

In the following table itemize parts that may be replaced in the field. If further breakdown is needed, contact us for assistance.

❖ 8.1 "MH" PARTS LISTING

Part	MH- -0014	MH- -0020	MH- -0033	MH- -0066
Motor, 115VAC	CM-MTR-0014-A	CM-MTR-0020-A	CM-MTR-0033-A	CM-MTR-0066-A
Motor, 230VAC	CM-MTR-0014-B	CM-MTR-0020-B	CM-MTR-0033-B	CM-MTR-0066-B
Bracket Mount		0140005		
Clamp Mount		0140001		
Thread Mount		0140015		
Flange Mount		0140010		
Coupling, Brass	0140030		0140031	
Coupling, 316SS	0140040		0140041	
Axial Impeller	0140020	0140021	0140021	0140022
Shaft Assembly	0140050	0140051	0140051	0140052

Note: Thread mount mixer uses 0140020 Axial Impeller and uses 0140050 shaft assemblies on all models.

✪ 8.2 “GD” PARTS LISTING

Part	GD- -0166	GD- -0250	GD- -0330	GD- -0500	GD- -0750
Motor, 115VAC	CM-MTR-0166-A	CM-MTR-0250-A	CM-MTR-0330-A	CM-MTR-0500-A	CM-MTR-0750-A
Motor, 230VAC	CM-MTR-0166-B	CM-MTR-0250-B	CM-MTR-0330-B	CM-MTR-0500-B	CM-MTR-0750-B
Bracket Mount	0140006				
Clamp Mount	0140002				
Thread Mount	0140016				
Flange Mount	0140011				
Coupling, Brass	0140033				0140034
Coupling, 316SS	0140043				0140044
Axial Impeller	0140023	0140024			0140025
Shaft Assembly	0140053	0140054			0140055

Part	HD- -1000	HD- -1500	HD- -2000
Motor, 115VAC	CM-MTR-1000-A	CM-MTR-1500-A	CM-MTR-2000-A
Motor, 230VAC	CM-MTR-1000-B	CM-MTR-1500-B	CM-MTR-2000-B
Bracket Mount	0140007		
Clamp Mount	0140003		
Thread Mount	0140017		
Flange Mount	0140012		
Coupling, Brass	0140034		0140035
Coupling, 316SS	0140044		0140045
Axial Impeller	0140026	0140027	0140028
Shaft Assembly	0140056	0140057	0140058

✪ 9.0 TROUBLE SHOOTING

If you are having problems, contact us at repairs@gtpcompany.com, or you can call us at the number on the front of the Instruction manual.

✪ 10.0 NOTES

✪ 11.0 PRODUCT LABEL

Model:

Serial Number:
